

ADAM-5017UH

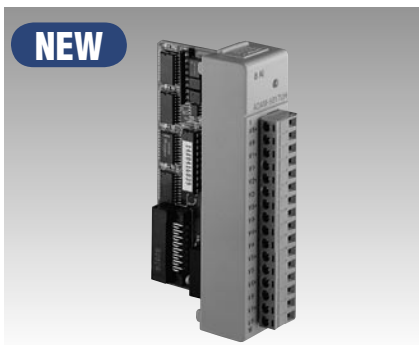
ADAM-5018

ADAM-5024

8-channel Ultra High Speed Analog Input Module

7-channel Thermocouple Input Module

4-channel Analog Output Module

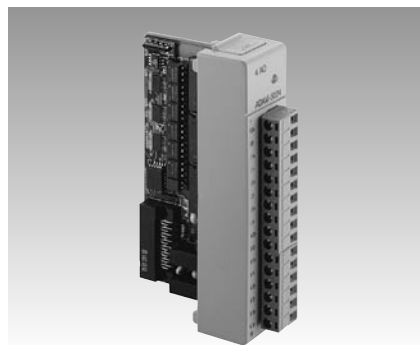


NEW

ADAM-5017UH



ADAM-5018



ADAM-5024



Specifications

Analog Input

- **Channels** 8 differential
- **Resolution** 12-bit
- **Integral Non-linear** +/-1 LSB
- **Differential Non-linear** +/-1 LSB
- **Low or high pass filter** Configured by User
- **Input Type** mV, V, mA
- **Input Range** ±10V, +0~10V, 0~20mV, +4~20mA
- **Isolation Voltage** 3000 V_{DC}
- **Sampling Rate** 200K (single channel)
35K (8 channel)
- **Input Impedance** 20 MΩ (voltage inputs)
120 Ω (current inputs)
- **Bandwidth** 200 kHz
- **Signal Input Bandwidth** 200 kHz for both voltage and current inputs
- **Accuracy** ±0.1% or better
- **CMR @ 50/60 Hz** 92 dB min
- **Power Consumption** 1.75 W (typical)
2.2 W (max)
- **Distinct Range Settings Allowed on Each Channel**

Note: The voltage difference between any two pins must not exceed 15 V

Ordering Information

- **ADAM-5017UH** 8-channel Ultra High Speed Analog Input Module

Specifications

- **Channels** 7 differential
- **Effective Resolution** 16-bit
- **Input Type** mV, V, mA, thermocouple
- **Input Range** ±15 mV, ±50 mV, ±100 mV, ±500 mV, ±1 V, ±2.5 V, ±20 mA
- **T/C Type and Temperature Range**

J	0°	~	760° C
K	0°	~	1370° C
T	-100°	~	400° C
E	0°	~	1000° C
R	500°	~	1750° C
S	500°	~	1750° C
B	500°	~	1800° C
- **Isolation Voltage** 3000 V_{DC}
- **Fault and Overvoltage Protection** Withstands overvoltage
Up to ±35 V
- **Sampling Rate** 10 samples/sec. (total)
- **Input Impedance** 2 MΩ
- **Bandwidth** 13.1 Hz @ 50 Hz, 15.72 Hz @ 60 Hz
- **Accuracy** ±0.1% or better
- **Zero Drift** ±0.3 mV/° C
- **Span Drift** ±25 PPM/° C
- **CMR @ 50/60 Hz** 92 dB min
- **Power Consumption** 0.5 W (typical);
0.63 W (max.)

Ordering Information

- **ADAM-5018** 7-channel Thermocouple Input Module - mV, V, mA, thermocouple

Specifications

- **Channels** 4
- **Effective Resolution** 12-bit
- **Output Type** mA, V
- **Output Range** 0 ~ 20 mA, 4 ~ 20 mA, 0 ~ 10 V
- **Isolation Voltage** 3000 V_{DC}
- **Accuracy** ±0.1% of FSR for current output
±0.2% of FSR for voltage output
- **Resolution** ±0.015% of FSR
- **Zero Drift** Voltage output: ±30 mV/° C
Current output: ±0.2 mA/° C
- **Span Temperature Coefficient** ±25 PPM/° C
- **Programmable Output Slope** 0.125 ~ 128.0 mA/sec.;
0.0625 ~ 64.0 V/sec.
- **Current Load Resistor** 0 ~ 500 Ω (source)
- **Power Consumption** 1.4 W (typical);
2.9 W (max.)

Ordering Information

- **ADAM-5024** 4-channel Analog Output Module - mA, V