

ADAM-5051/D

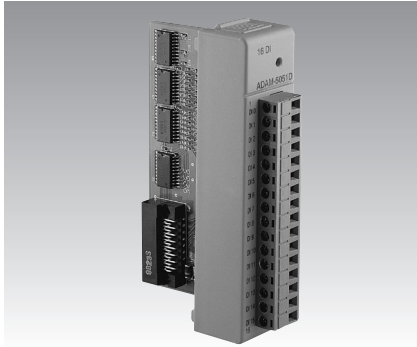
ADAM-5051S

ADAM-5052

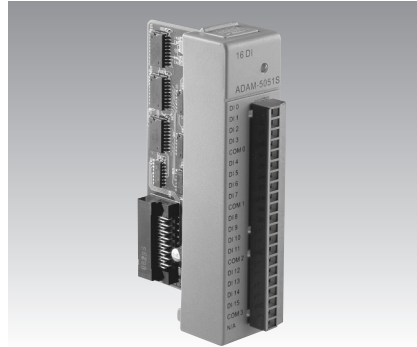
16-channel Digital Input w/ LED Module

16-channel Isolated Digital Input w/ LED Module

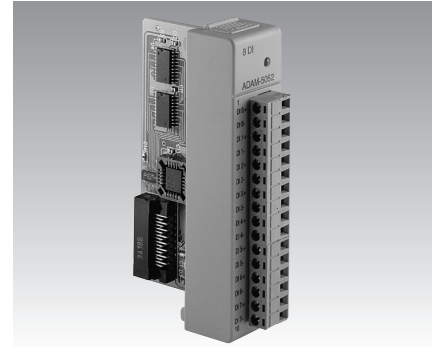
8-channel Isolated Digital Input Module



ADAM-5051/5051D



ADAM-5051S



ADAM-5052



Specifications

- **Channels** 16
- **Input Voltage** 30 V_{max}
- **Logic Level** Logic level 0: +1 V_{max}
Logic level 1: +3.5 V to +30 V
- **Circuit Type** Pull-up current: 0.5 mA (Source Type)
- **Power Consumption** ADAM-5051: 0.4 W (typical); 0.53 W (max.)
ADAM-5051D: 0.5 W (typical); 0.84 W (max.)
- **LED Indicators: (ADAM-5051D)**
On: Input logic level 1
Input floating
Off: Input logic level 0
- **Certifications** CE
FM (ADAM-5051 only)

Ordering Information

- **ADAM-5051** 16-channel Digital Input Module
- **ADAM-5051D** 16-channel Digital Input W/LED Module

Specifications

- **Channel** 16
- **Input Voltage** 50 V_{max}
- **Input Voltage level** Logic level 0: +3 V_{max}
Logic level 1: +10 to 50 V
- **Optical Isolation** 2500 V_{DC}
- **Over Voltage Protection** 70 V_{DC}
- **Power Consumption** 0.8 W (typical)
- **LED Indicators** On: Active
Off: Non-active

Ordering Information

- **ADAM-5051S** 16-channel Isolated Digital Input W/LED Module

Specifications

- **Channels** 8
- **Digital Input Level** Logic level 0: +1 V_{max}
Logic level 1: +3.5 V to +30 V
- **Isolation Voltage** 5000 V_{RMS}
- **Input Resistance** 3 k Ω / 0.5 W
- **Power Consumption** 0.21 W (typical); 0.27 W (max)

Ordering Information

- **ADAM-5052** 8-channel Isolated Digital Input w/LED Module