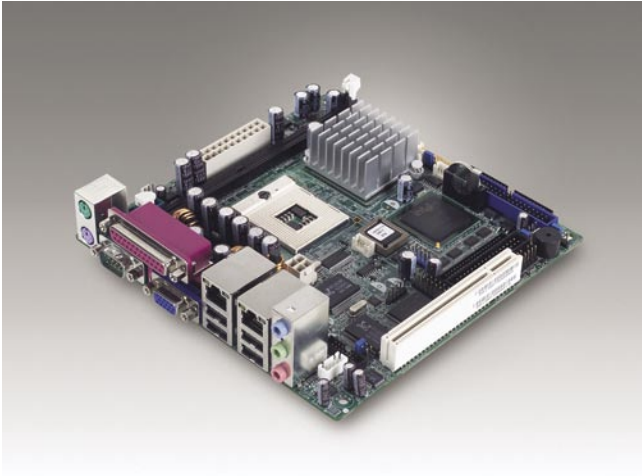


AIMB-240

Intel® Pentium® 4 Processor-based Mini-ITX Motherboard with 6 COM ports and Dual LANs



Features

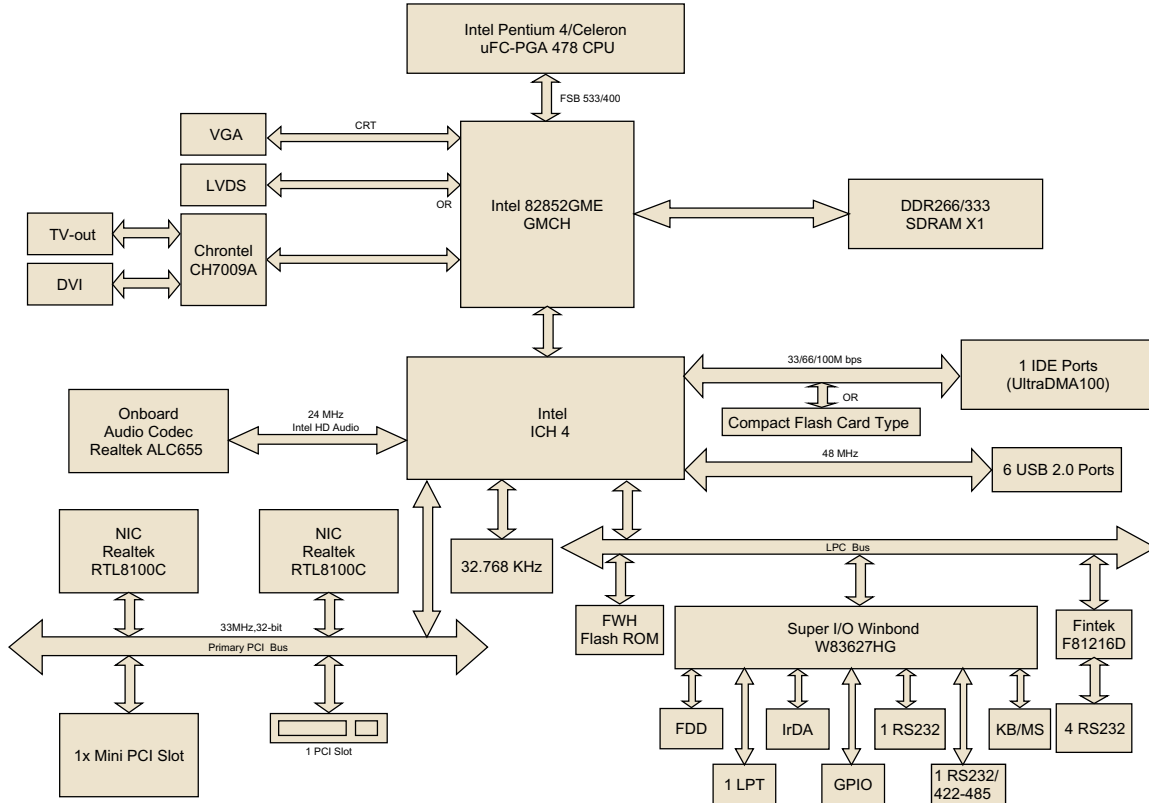
- Supports 90nm Intel® µFC-PGA 478 Pentium® 4/Celeron® CPU
- Intel 82852GME Chipset
- One DIMM socket supports up to 1 GB DDR 266/333 SDRAM
- 2-CH LVDS, DVI
- 5.1 CH Audio, TV-out
- Dual Realtek™ RTL8100C 10/100 Mbps LAN
- One PCI, one mini PCI, Type I/II CF
- Six COM, six USB 2.0, 8-bit GPIO



Specifications

Processor System	CPU	Intel Pentium 4	Celeron		
	Max. Speed	2.8 GHz	2.8 GHz		
	Front Side Bus	400/533 MHz	400 MHz		
	L2 Cache	512 KB	256 KB		
	Chipset	Intel 82852GME + ICH4			
	BIOS	Award™ 4 Mb FWH			
	Expansion Slot	PCI	32-bit/33MHz, 1 slot		
Mini-PCI		32-bit/33MHz, 1 slot			
Memory	Technology	DDR 266/333 SDRAM			
	Max. Capacity	1GB			
	Socket	One 184-pin DIMM socket			
Graphic	Controller	Chipset Integrated VGA Controller			
	VRAM	Shared system memory up to 64 MB video memory			
	LVDS	Single channel 18-bit/ Dual-channel 36-bit LVDS			
	TV-Out	Supports both S-video and composite video			
	DVI	Chrontel® CH7009A TV encoder supports both NTSC/PAL			
	Dual Display	Chrontel CH7009A DVI transmitter up to 135M pixels/second CRT + LVDS, or DVI/TV-out + LVDS or CRT + DVI			
Ethernet	Interface	10/100Base-T			
	Controller 1	LAN 1 Realtek RTL8100C FE LAN (PCI)			
	Controller 2	LAN 2 Realtek RTL8100C FE LAN (PCI)			
	Connector	2 (RJ45)			
EIDE	Mode	EIDE (Ultra DMA 100)			
	Channel	2			
Rear I/O	VGA	1			
	Ethernet	2			
	USB	4 (USB 2.0 ports)			
	Audio	Mic-In, Line-In, Line-Out (Realtek ALC655 supports 5.1 CH AC97 Audio)			
	Parallel	1			
	Serial	1 (RS232)			
	PS/2	2 (1 x keyboard and 1 x mouse)			
Internal Connector	LVDS	1			
	TV-Out	1			
	DVI	1			
	USB	2 (USB 2.0 ports)			
	Serial	5 (one is RS-232/422/485)			
	IDE	2 (40/44-pin)			
	Compact Flash	1			
	IrDA	115k bps, IrDA 1.0 compliant			
	FDD	1			
	DIO	8-bit general purpose I/O for DI and DO			
Watchdog Timer	Output	System reset			
	Interval	Programmable 1 ~ 255 sec			
Power Requirement	Typical	Pentium 4 2.4 GHz FSB533, 256 MB SDRAM			
		+5 V	+3.3 V	+12 V	+5 VSB
		1.41 A	4.84 A	5.19 A	2 A
		Operating			
Environment	Temperature	0 ~ 60° C (32 ~ 140° F)			
	Physical Characteristics	Dimensions	170 mm x 170 mm (6.69" x 6.69")		

Block Diagram



Ordering Information

Part Number	Specification
AIMB-240F-00A1E	Intel Pentium 4/Celeron Mini-ITX Motherboard with VGA, 2-CH LVDS, DVI, TV-out, 5.1 CH Audio, Dual LAN, CF, PCI, Mini-PCI, 6 COM, 6 USB 2.0 & GPIO

*CPU cooler is not included. Please use Advantech certified CPU coolers. Part number can be found in Ch6 accessories list.

Bracket View



AIMB-240F-00A1E

Packing List

Description	Quantity
AIMB-240 SBC	x 1
IDE HDD cable (40 pin)	x 1
IDE HDD cable (44 pin)	x 1
FDD cable	x 1
CPU cooler (supports Pentium 4 2.0 GHz)	x 1
I/O port bracket	x 1
Startup manual	x 1
Driver CD	x 1
Serial cable (RS-232)	x 1
Serial cable (RS-422/485)	x 1

Accessories

Part Number	Description
1701400181	Cable kits for 4 serial ports
1703050306	TV-Out cable
1700100170	USB cable (17.5 cm)
1700000410	DVI cable
1750000880	CPU cooler supports max. Pentium 4 2.0 GHz
1750000882	CPU cooler supports max. Pentium 4 2.8 GHz