

FWA-3660

Rackmount Internet Security Platform with 4 Ethernet Ports



NEW

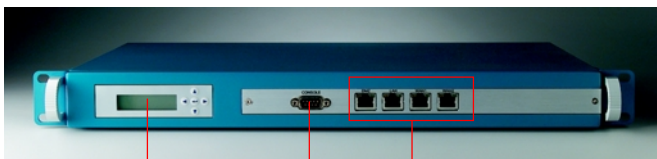
Features

- Internet security platform for ROBO, SOHO and SMB
- Four Fast 10/100 Ethernet ports
- Console port for local setting
- 8 LED indicators show the status of 4 LANs
- Hard drive mounting bracket for 3.5" drive
- LCD module

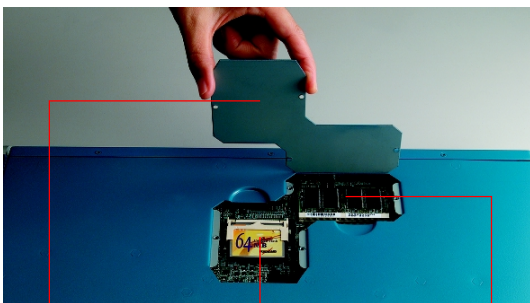
Introduction

Considered as a powerful Rackmount Internet security platform the FWA-3660 was specifically designed for Internet secure connectivity. It is suitable for SOHO (Small Office, Home Office), SMB (Small Medium Business), and ROBO (Remote Office, Branch Office) segments. Designed with the Intel®Pentium®III/Celeron processor, it provides high performance and meets the requirements of Internet security appliances. The system supports a CompactFlash used in installing OS and internet security application, avoiding service disruption caused by hard disk's mechanical/magnetic failures. In addition, the FWA-3660 can support system memory

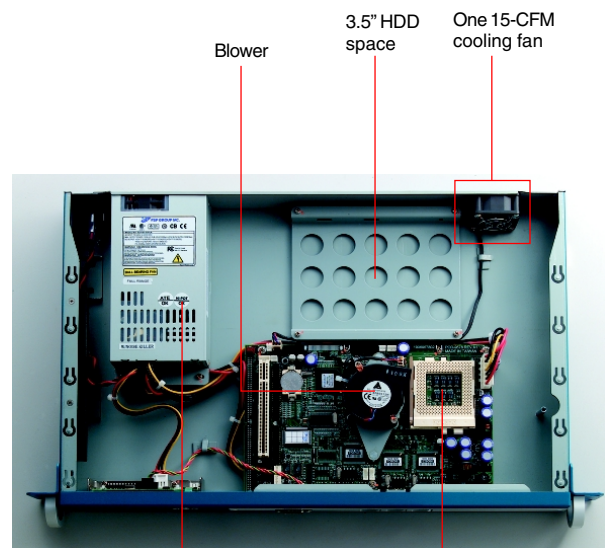
up to 512 MB SDRAM. Both the CompactFlash card and SDRAM can be accessed and replaced for software upgrade through an easily removable cover. Designed with the Plug-and-Serve concept in mind, the FWA-3660 offers four 10/100 Mbps auto-sensing Fast Ethernet ports in the front panel. There are eight LED indicators on the front panel display that monitors LAN activities and LAN link. For easy access, the front panel has a 9-pin, RS-232 serial port for local system management, maintenance, and diagnostics. The FWA-3660 reserves a place for an optional 3.5" IDE HDD. It meets FCC and CE compliance.



LCD module RS-232 console port Four Ethernet ports

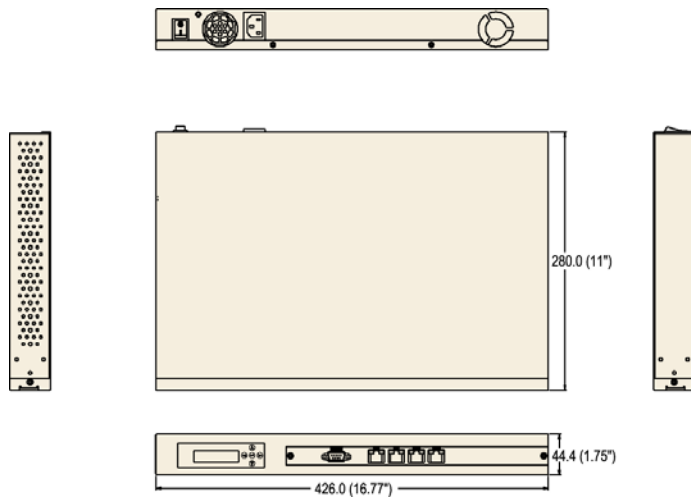


Removable cover allows easy maintenance and software upgrade CompactFlash socket SDRAM



Blower 3.5" HDD space One 15-CFM cooling fan
Power supply FC-PGA370 CPU socket

Dimension Diagram



Unit: mm (inch)

Specifications

Processor System	CPU	Intel Pentium III/Celeron	
	Max. Speed	1.26 GHz/1.2 GHz	
	L2 Cache	512KB, 256KB/256KB, 128 KB	
	Chipset	Intel 815E	
	BIOS	Award 2 Mb Flash	
Memory	Technology	PC-133 SDRAM (SO-DIMM)	
	Max. Capacity	512 MB	
Ethernet	Interface	10/100 Base-TX	
	Controller	Intel 82559ER x 3	
	Connector	RJ-45 x 4	
Drive Bay	3.5"HDD	1	
Cooling	Fan	1(15 CFM/each)	
	Blower	1	
Management	Console	RS-232 x1	
Miscellaneous	Control	Power switch	
	Indicators	8 LED indicators for 4 LANs	
	CompactFlash Socket	1	
	LCD module	1	
Adapter Power Requirement	Input	AT PS, AC 90 ~ 264 V full range @ 47 ~ 63 Hz	
	Output	180 W	
Environment	Temperature	Operating	Non-Operating
		0 ~ 40 C (32 ~ 104 F)	-20 ~ 75 C (-4 ~ 167 F)
	Humidity	5 ~ 85 % @ 40 C (104 F)	5 ~ 95 %
Physical	Dimensions (W x H x D)	426 x 44 x 280 mm (16.7" x 1.7" x 11")	
	Weight	4.5 Kg (9.9 lb)	

Ordering Information

Part Number	Processor	LAN	Power Supply	CompactFlash	SDRAM	HDD drive
FWA-3660	--	4	180 W	--	--	--

Accessory Options

Part Number	Descriptions
1703080101	Power cable
1701440500	2.5" HDD cable
1703100260	USB cable
1700260250	Parallel cable
1700100250	Secondary serial port cable
1701160101	VGA port cable
1700060200	Keyboard/ PS2 mouse cable
1701440500	Flat Cable 44P 50cm: 44P/40P/40P(Idiot-Proof)

- CompactPCI Enclosures 1
- CompactPCI Boards 2
- CompactPCI Peripherals 3
- Blade Servers 4
- Network Appliances 5
- e-Server Systems 6
- Storage Subsystems 7
- Industrial Computer Chassis 8
- Full-sized CPU Cards 9
- Industrial Computer Peripherals 10