

FWA-3680

Rackmount Internet Security Platform with 4 Front LAN Ports and Dual PCI Expansion Slots



CE FCC

Features

- 1U rackmount Internet security platform
- Socket 370 Intel® Pentium® III or Celeron® up to 1.26 GHz
- Dual 32-bit/33 MHz PCI expansion slots
- Four 10/100 Fast Ethernet ports
- Console port for local setting
- Hard drive mounting bracket for 3.5" drive

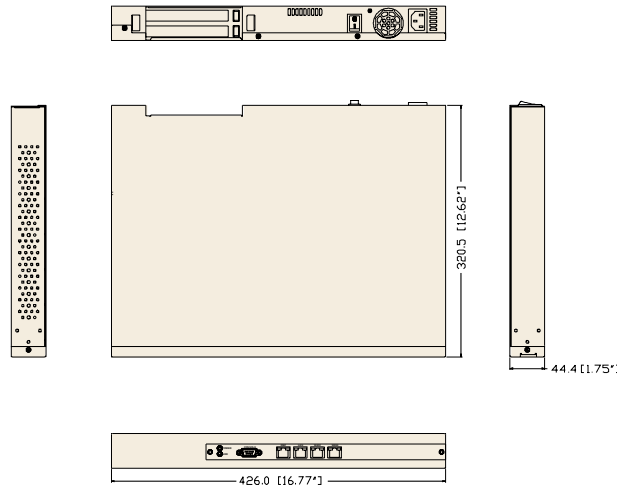
Introduction

Conceived as a powerful rackmount Internet security platform, the FWA-3680 is specifically designed for Internet secure connectivity. Designed with the Intel Pentium III or Celeron processor, it provides high performance and meets the requirements of Internet security appliances. The system supports CompactFlash for use in installing OS and Internet security applications. This avoids service disruption caused by hard disk mechanical/magnetic failures. In addition, the FWA-3680 can support system memory up to 512 MB SDRAM. Both CompactFlash and SDRAM can be accessed and replaced for software upgrades through an easily removable cover. Designed with the Plug-and-Serve concept in mind, the FWA-3680 offers four 10/100 Mbps auto-sensing Fast Ethernet ports in the front panel. There are two LED Indicators which monitor Power and HDD activities. For easy access, the front panel has a 9-pin, RS-232 serial port for local system management, maintenance and diagnostics. The FWA-3680 has a place reserved for an optional 3.5" IDE HDD and dual PCI expansion slots. It is FCC and CE compliant.

Specifications

| | | | |
|--------------------------|------------------------|--|--|
| Processor System | CPU | Intel Pentium III | Intel Celeron |
| | Max. Speed | 1.26 GHz | 1.2 GHz |
| | L2 Cache | 512/256 KB | 256/128 KB |
| | Chipset | Intel 815E | |
| | BIOS | Award 4 Mb Flash | |
| Memory | Technology | PC-133 SDRAM | |
| | Max. Capacity | 512 MB | |
| | Socket | 144-pin SO-DIMM | |
| Ethernet | Interface | 10/100Base-TX | |
| | Controller | Intel 82559ER x 3, Intel 82564ET x 1 | |
| | Connector | RJ-45 x 4 | |
| Drive Bay | 3.5" HDD | 1 (optional) | |
| Cooling | Blower | 1 (3 CFM), 1 (4 CFM) | |
| Management | Console | RS-232 x 1 | |
| Miscellaneous | Control | Power switch | |
| | Indicators | 2 LED indicators for Power/HDD | |
| | CompactFlash Socket | 1 | |
| Power Requirement | Input | ATX PS, AC 90 ~ 264 V @ 47 ~ 63 Hz, full range | |
| | Output | 180 W | |
| Environment | Temperature | Operating 0 ~ 40 °C (32 ~ 104 °F) | Non-Operating -20 ~ 75 °C (-4 ~ 167 °F) |
| | Humidity | 5 ~ 85 % @ 40 °C (104 °F) | 5 ~ 95 % |
| | Dimensions (W x H x D) | 426 x 44 x 320 mm (16.8" x 1.7" x 12.6") | |
| Physical Characteristics | Weight | 4.5 Kg (9.9 lb) | |

Dimensions



Unit: mm (inch)

Ordering Information

| Part Number | Processor | LAN | Power Supply | PCI Slot | CompactFlash | SDRAM | HDD Drive |
|-------------|-----------|-----|--------------|----------|--------------|-------|-----------|
| FWA-3680 | - | 4 | 180 W | 2 | - | - | - |

Accessories

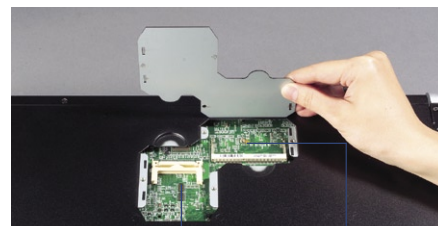
| Part Number | Description |
|-------------|--|
| 1703080101 | Power cable wire 7P/Big 4P*2 10 cm |
| 1703100260 | USB cable |
| 1700260250 | Parallel cable: ASS'Y LPT port 25 cm 25P to 26P 2.0 mm |
| 1700100250 | Secondary cable: ASS'Y COM port 25 cm D-SUB 9P to 10P 2.0 mm |
| 1703080160 | PS/2 Y cable MINI DIN 16CM |
| 1701160101 | VGA cable: ASS'Y VGA 10 cm D-SUB 15P to 16P 2.0 mm |
| 1701440350 | Flat cable 44P 35 cm Gray IDC44P/IDC44P/IDC44P |
| 1701440500 | Flat cable 40P 50 cm Gray IDC40P/IDC40P/HOUSING44P |
| 1700081401 | Cable Ethernet cross over 8P to 8P 140 cm |

Packing List

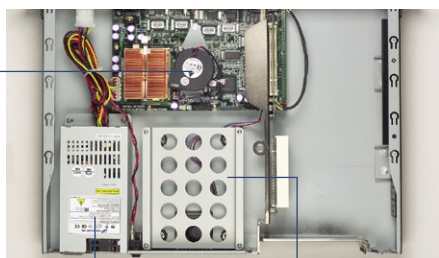
| Part Number | Description |
|-------------|--------------------|
| 170144030A | IDE flat cable 40P |
| 1701100306 | Console cable |
| 1961600000 | CPU cooler |



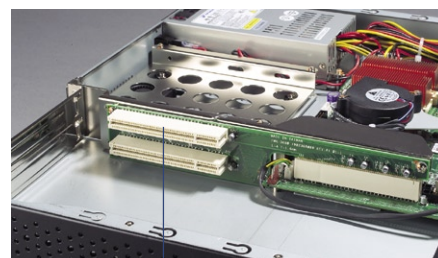
RS-232 console port Four LAN ports



CompactFlash socket SDRAM socket



Blower Power supply 3.5" IDE HDD space



Dual 32-bit/33 MHz PCI expansion slots