

# RAID-500U3

## 5U Ultra 160 SCSI RAID Subsystem



### Features

- High capacity 19" rackmount RAID disk array subsystem
- 64-bit RISC high performance RAID processor
- Ultra 160 SCSI to SCSI interface
- Host OS independent
- RAID levels 0, 1, (0+1), 3, 5, 30, 50
- Eight SCA-2 hot swap disk drive bays (1.6" height)
- Multiple host, MSCS clustering support
- 300 W (1+1) hot-swappable redundant power supply
- Web and text-based GUI management interface
- Management via In-band SCSI, LAN SNMP, and RS-232

### Introduction

#### Hot-swap, Auto-rebuild, Hot-spare

The RAID-500U3 allows failed HDD to be hot-swapped and replaced with a new HDD. The system will dynamically reconfigure the drives and auto-rebuild the lost data in the background, with no need for rebooting.

Users can specify some of the HDDs as spare in advance, thus enabling the RAID-500U3 to recover data automatically (hot-spare). Other functions from RAID-500U3 include hot stand-by, auto drive failure detection, and so on.

#### Real-time, Remote Alarm Notification

The RAID-500U3 is equipped with an alarm board for automatically detecting and notifying you of a power failure, fan failure and overheating within the chassis. Audible and visual alarms enable users to locate the problems immediately. You can also set your system to send the alarm notification to a remote host, or a pager via a modem.

#### On-line Expansion

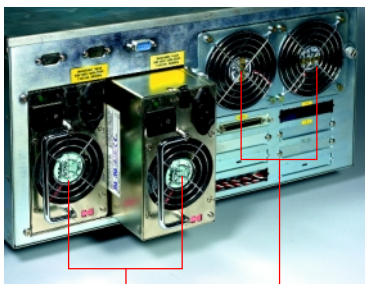
The RAID-500U3 can easily be scaled to provide huge storage capacity. Each SCSI channel supports up to 8 drives, enabling you to expand your system up to hundreds of GBs.

New HDDs can be added to the RAID-500U3 spare disk cartridge on-line and can be scanned and identified automatically. The system will update the configuration in the background.

#### Friendly User Interface

The RAID controller provides four operation buttons and a LCD display window for users to easily configure the RAID parameters.

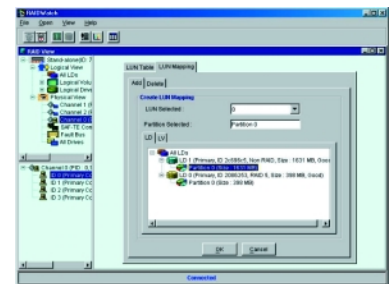
With a hybrid agent installed on the host, any client supporting Java 2.0 or higher can communicate with the controller through LAN or Internet. The hybrid agents talk to the controller via either RS-232 serial link or the host SCSI channel.



Redundant power supply    Cooling fans

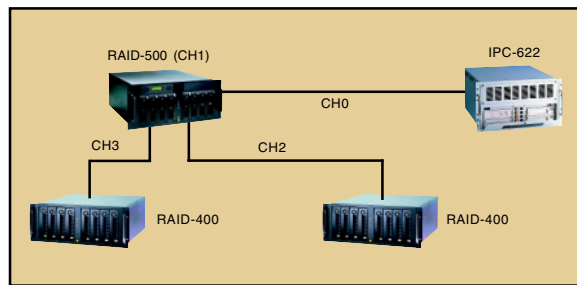


Easy setup LCD front panel

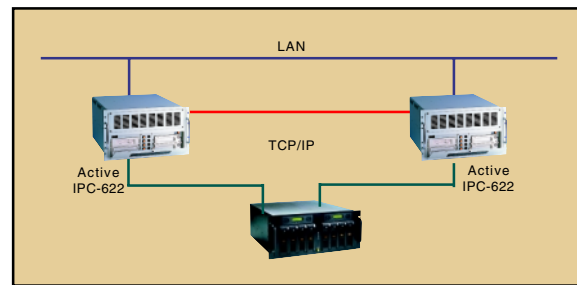


RAID Manager GUI





Single Host Configuration with Multiple Expansion Chassis



Dual Host Configuration with Windows NT/NT Clustering

## Specifications

Processor System	CPU	PowerPC 64-bit RISC	
Cache Memory	Max. Capacity	1 GB (64 MB installed)	
Channel	Number of Host or Drive Channel	4 (extendable up to 8)	
	Interface	SCSI Ultra 160, LVD	
	Max. Data Transfer Rate	160 MB/sec.	
	All Channels Can be Assigned as Host or Drive	Yes	
	Multiple Host Support	Yes	
Drive Bay	MSCS Clustering Support	Yes	
	3.5" HDD	8	
	Max. Capacity	1440 GB (180 GB x8)	
	Drive Form Factor	1.6" height	
	Drive Interface	Ultra 160, SCA-2 (80-pins)	
RAID	Security Lock/Door	Yes	
	Level	0, 1, 0+1, 3, 5, 30, 50	
	Auto Rebuilding	Yes	
	Hot-Spare	Yes	
	On-line Expansion	Yes	
Cooling	Fan	2 (49 CFM/each)	
Management	Control & Monitoring	Web-based GUI management software, text-based RAID manager software via In-band SCSI, LAN SNMP, RS-232	
	Alert Notification	Fax, e-mail, pager	
	S.M.A.R.T (Self-Monitoring Analysis and Reporting Technology)	Yes	
	Fault Detection System	Fan, temperature, power supply	
	Control	Power switch and alarm mute switch	
Power Supply	Indicator	LCD/LED for power, fan, temperature, and HDDs	
	Watt	300 W (1+1 redundant, 300 W/each)	
	Input	AC 115 V	AC 230 V
		5 A	2.5 A
		50 ~ 60 Hz	50 ~ 60 Hz
Environment	Operating Temperature	0 ~ 50 °C (32 ~ 122 °F)	
	Non-Operating Temperature	-40 ~ 60 °C (-40 ~ 140 °F)	
	Humidity	10 ~ 85 %, non-condensing	
Physical	Dimensions (W x H x D)	482 x 222 x 482 mm (19" x 8.75" x 19")	
	Weight	24 Kg (52.8 lb)	

## Ordering Information

Part Number	RAID Controller	Controller CPU	DRAM for RAID Controller	No. of SCSI Channels	RAID Level	SCSI Interface	SCSI Bandwidth	SCSI Cable	SCSI Disk Cartridges Installed
RAID-500U3-B	Yes (Single)	RISC, 64-bit	64 MB	4	0, 1, (0+1), 3 or 5	Ultra160	160 MB/sec.	LVDS	8 (SCA 80-pin type)
RAID-500M	--	--	--	--	--	Ultra160	160 MB/sec.	LVDS	8 (SCA 80-pin type)
RAID-500	--	--	--	--	--	Ultra160	160 MB/sec.	LVDS	--

## Accessory Options

Part Number	Descriptions
RAID-400M	4U SCSI disk enclosure with 300 W redundant power supply and 8 SCA disk cartridges
RAID-400	4U SCSI disk enclosure with 300 W redundant power supply, without disk cartridges
RHC-U160-BLK	SCSI Ultra160 removable HDD cartridge for 80-pin SCA HDD, black
1700681001	U3 SCSI external cable with 2 male connectors, 1M
1700681800	U3 SCSI external cable with 1 VHDCI, M-M, 1M

CompactPCI Enclosures 1

CompactPCI Boards 2

CompactPCI Peripherals 3

Blade Servers 4

Network Appliances 5

e-Server Systems 6

Storage Subsystems 7

Industrial Computer Chassis 8

Full-sized CPU Cards 9

Passive Backplanes 10

Industrial Computer Peripherals 11