

RAID-6100U3

4U Ultra 160 SCSI RAID Subsystem



Features

- High capacity 19" rackmount RAID disk array subsystem
- 64-bit RISC high performance RAID processor
- Ultra 160 SCSI to SCSI interface
- Host OS independent
- RAID levels 0, 1, (0+1), 3, 5, 30, 50
- Twelve SCA-2 hot-swappable disk drive bays (1" height)
- Multiple host, MSCS clustering support
- 575 W (2+1) hot-swappable redundant power supply
- Web & text-based GUI management interface
- SAF-TE support
- Management via In-band SCSI, LAN SNMP, RS-232

Introduction

Hot-swap, Auto-rebuild, Hot-spare

The RAID-6100U3 provides several configurations designed for high data availability. The failed HDD to be hot-swapped and replaced with a new HDD. The system will dynamically reconfigure the drives and auto-rebuild the lost data in the background, with no need for rebooting.

Users can specify some of the HDDs as spare in advance, thus enabling the RAID-6100U3 to recover data automatically (hot-spare). Other functions from RAID-6100U3 include hot stand-by, auto drive failure detection, and so on.

Real-time, Remote Alarm Notification

The RAID-6100U3 is equipped with an alarm board that will automatically detect and notify you of a power failure, fan failure and overheating within the chassis. Audible and visual alarms enable users to locate the problems immediately. You can also set your system to send alarm notification to a remote host, or a pager via a modem.

On-line Expansion

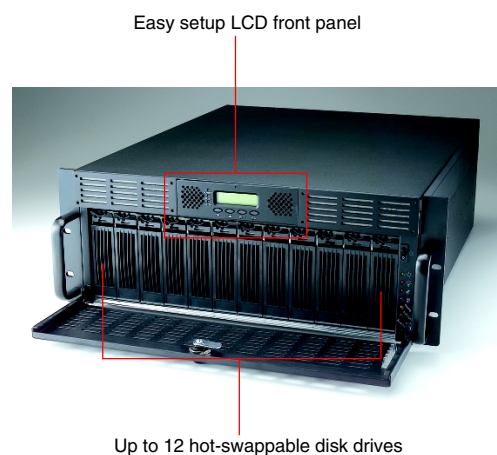
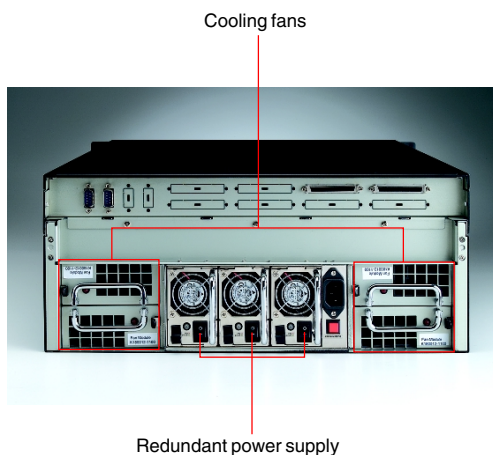
The RAID-6100U3 can easily be scaled to provide huge storage capacity. Each SCSI channel supports up to 12 drives, enabling you to expand your system up to hundreds of GBs.

New HDDs can be added to the RAID-6100U3 spare disk cartridge on-line and can be scanned and identified automatically. The system will update the configuration in the background.

Friendly User Interface

The RAID controller provides four operation buttons and a LCD display window for users to easily configure the RAID parameters.

With a hybrid agent installed on the host, any client supporting Java 2.0 or higher can communicate with the controller through LAN or Internet. The hybrid agents talk to the controller via either RS-232 serial link or the host SCSI channel.

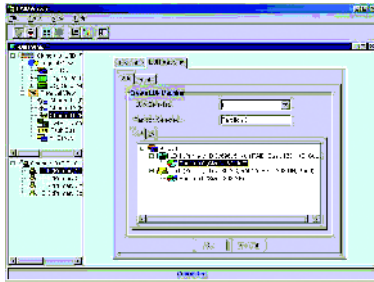


CE FCC

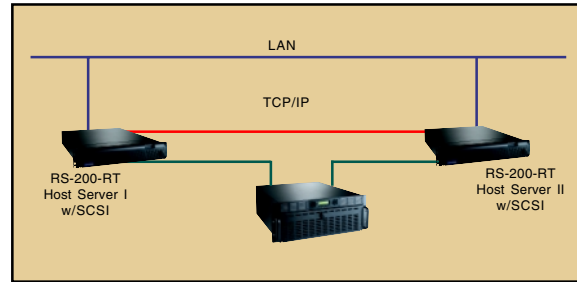
ADVANTECH

• All brand names and registered trademarks are the property of their respective owner
• All specifications are subject to change without notice

Date of Publication: 2003-07-14



RAID Manager GUI



Dual Host Configuration with Windows NT/NT Clustering

Specifications

Processor System	CPU	PowerPC 64-bit RISC	
Cache Memory	Max. Capacity	1 GB (64 MB installed)	
Channel	Number of Host or Drive Channel	4 (extendable up to 8)	
	Interface	SCSI Ultra 160, LVD	
	Max. Data Transfer Rate	160 MB/sec.	
	All Channels Can be Assigned as Host or Drive	Yes	
	Multiple Host Support	Yes	
	MSCS Clustering Support	Yes	
Drive Bay	3.5" HDD	12	
	Max. Capacity	1752 GB (146 GB x12)	
	Drive Form Factor	1" height (low profile)	
	Drive Interface	Ultra 160, SCA-2 (80-pins)	
	Backplane Board	Yes	
	Security Lock/Door	Yes	
RAID	Level	0, 1, 0+1, 3, 5, 30, 50	
	Auto Rebuilding	Yes	
	Hot-Spare	Yes	
	On-line Expansion	Yes	
Cooling	Fan	4 (hot-swap)	
	Management	Control & Monitoring	Web-based GUI management software, text-based RAID manager software via In-band SCSI, LAN SNMP, RS-232
		Alert Notification	Fax, e-mail, pager
		SAFE-TE Supported	Yes
		S.M.A.R.T (Self-Monitoring Analysis and Reporting Technology)	Yes
		Fault Detection System	HDDs, fan, temperature, power supply
		Control	Power switch and alarm mute switch
		Indicator	LCD/LED for power, fan, temperature, and HDDs (w/HDD failure indicators)
Power Supply		Watt	575 W (2+1) redundant
Power Supply	Input	AC 115 V 50 ~ 60 Hz	AC 230 V 50 ~ 60 Hz
	Environment	Temperature	Operating 0 ~ 50 °C (32 ~ 122 °F)
Humidity		10% ~ 85%, non-condensing	10 % ~ 85 %, non-condensing
Physical		Dimensions (W x H x D)	482 x 176 x 543 mm (19" x 6.9" x 21.3")
	Weight	20 Kg (44.1 lb)	

CompactPCI Enclosures 1

CompactPCI Boards 2

CompactPCI Peripherals 3

Blade Servers 4

Network Appliances 5

e-Server Systems 6

Storage Subsystems 7

Industrial Computer Chassis 8

Full-sized CPU Cards 9

Passive Backplanes 10

Industrial Computer Peripherals 11

Ordering Information

Part Number	Descriptions
RAID-6100U3	4U SCSI to SCSI RAID subsystem

Accessory Options

Part Number	Descriptions
1700681001	U3 SCSI external cable with 2 male connectors, 1M
1700681800	U3 SCSI external cable with 1 VHDCI, M-M, 1M