

# PCM-3610

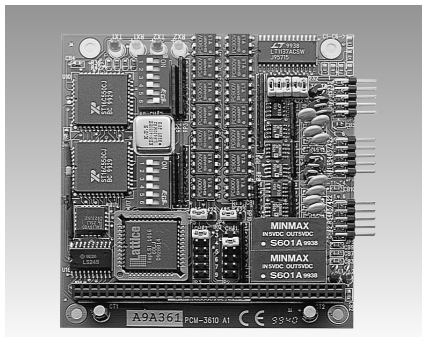
# PCM-3612

# PCM-3614

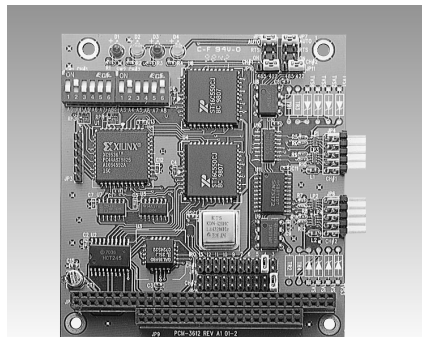
Isolated RS-232/422/485 Module

2-port RS-422/485 Module

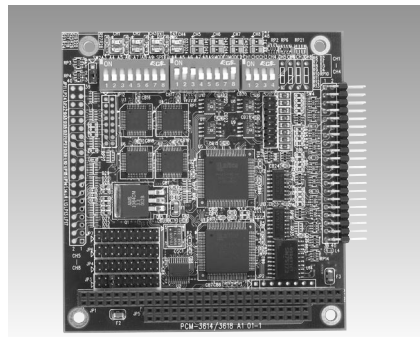
4-port RS-422/485 High-Speed Module



PCM-3610



PCM-3612



PCM-3614



## Features

- High speed transmission rate
- Automatic RS-485 data flow control
- Jumper selectable interrupt level
- Supports Windows 95/98/NT/2000/ME/CE, Linux (ICOM utility)

## Specifications

- **Channel 1** RS-232, 422, or 485
- **Channel 2** RS-422, or RS-485
- **Baud Rate** 50 ~ 115,200 bps
- **Character Length** 5, 6, 7, or 8 bits
- **Parity** Even, odd, or none
- **Stop Bit** 1, 1.5, or 2
- **Interrupt Level** IRQ 3, 4, 5, 6, 7, 9
- **I/O Connectors** Dual male DB-9
- **Power Consumption** +5 V @ 400 mA typical  
±12 V @ 950 mA max
- **Isolation** 1,000 V<sub>DC</sub>
- **Operating Temperature** 0 ~ 65° C (32 ~ 149° F)
- **Storage Temperature** -40~85° C (-40~185° F)
- **Operating Humidity** 0 ~ 90 % relative humidity, non-condensing

## Ordering Information

- **PCM-3610-B** Isolated RS-232/422/485 module

## Features

- Long distance communication
- Automatic RS-485 data flow control
- Jumper selectable interrupt level
- Supports Windows 95/98/NT/2000/ME/CE, Linux (ICOM utility)

## Specifications

- **Channel 1 and 2** RS-422, or RS-485
- **Baud Rate** 50 ~ 115,200 bps
- **Character Length** 5, 6, 7, or 8 bits
- **Parity** Even, odd, or none
- **Stop Bit** 1, 1.5, or 2
- **Interrupt Level** IRQ 3, 4, 5, 6, 7, 9, 10, 11, 12 or 15
- **I/O Connectors** Dual male DB-9
- **Power Consumption** +5 V @ 400 mA typical  
±12 V @ 950 mA max
- **LED** Red LED for TX  
Green LED for RX
- **Operating Temperature** 0 ~ 65° C (32 ~ 149° F)
- **Storage Temperature** -40~85° C (-40~185° F)
- **Operating Humidity** 0 ~ 90 % relative humidity, non-condensing

## Ordering Information

- **PCM-3612-A** Dual port RS-422/485 module

## Features

- Four Independent RS-422/485 serial ports
- Automatic RS-485 data flow control
- Transmission speeds up to 921.6 Kbps
- Shared IRQ settings for each ports
- LED indicators: TX, RX
- Standard PC ports: COM1, COM2, COM3, COM4 compatible

## Specifications

- **Number of Ports** 4
- **I/O Address** 0 x 000 ~ 0 x 3F8
- **IRQ** 3, 4, 5, 6, 7, 9, 10, 11, 12, 15
- **Data Bits** 5, 6, 7, 8
- **Stop Bits** 1, 1.5, 2
- **Parity** None, even, odd
- **Speed (bps)** 50 ~ 921.6 K
- **Connectors** 4 male DB-9
- **RS-422 Signal Support** TxD+, TxD-, RxD+, RxD-, CTS+, CTS-, RTS+ and RTS-
- **RS-485 Signal Support** DATA+, DATA-, CTS+, CTS-
- **Surge Protection** 1000 V<sub>DC</sub>
- **Built-in Termination Resistor** 120 Ω
- **Power Consumption** +5 V @ 450 mA
- **Operating Temperature** 0 ~ 65° C (32 ~ 149° F)
- **Storage Temperature** -40~85° C (-40~185° F)
- **Operation Humidity** 0 ~ 90 % relative humidity, non-condensing

## Ordering Information

- **PCM-3614-A** 4-port RS-422/485 High-Speed module