

ADAM-3900 Series

Wiring Terminal for DIN-rail Mounting



ADAM-3909

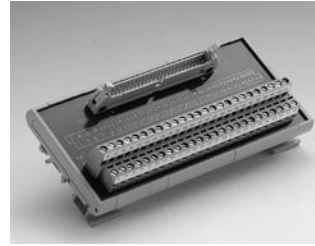
DB9 Wiring Terminal for DIN-rail Mounting

Features

- Low cost universal DIN-rail mounting screw terminal module for PC-LabCard™ products with DB9 connector.
- Case dimensions (W x L x H): 77.5 x 45 x 51 mm (3.1" x 1.8" x 2.0")

To Be Used With

PCL-728, PCL-740, PCL-741, PCL-743B, PCL-745B, PCL-832



ADAM-3950

50-pin Flat Cable Wiring Terminal for DIN-rail Mounting

Features

- Low cost universal DIN-rail mounting screw terminal module for PC-LabCard™ products with 50-pin flat cable connector.
- Case dimensions (W x L x H): 77.5 x 146.3 x 51 mm (3.1" x 5.8" x 2.0")

To Be Used With

PCL-722, PCL-724, PCL-731



ADAM-3920

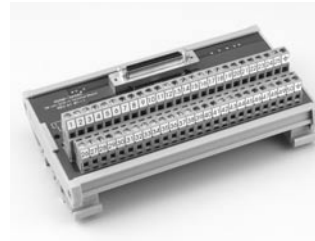
20-pin Flat Cable Wiring Terminal for DIN-rail Mounting

Features

- Low cost universal DIN-rail mounting screw terminal module for PC-LabCard products with 20-pin connector
- Case dimensions (W x L x H): 77.5 x 67.5 x 51 mm (3.1" x 2.7" x 2.0")

To Be Used With

PCL-711B/S, PCL-720+, PCL-726, PCL-727, PCL-730, PCL-812PG, PCL-816, PCL-818 Series, PCL-836, PCL-1800



ADAM-3950S

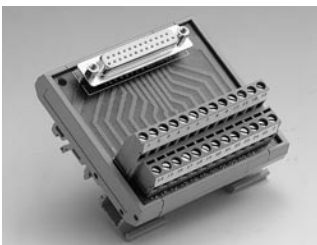
50-pin SCSI-II Wiring Terminal for DIN-rail Mounting

Features

- Low cost universal DIN-rail mounting screw terminal module for industrial applications with 50-pin SCSI-II female connector
- Case dimensions (W x L x H): 77.5 x 146.3 x 51 mm (3.1" x 5.8" x 2.0")

To Be Used With

PCI-1752, PCI-1754, PCI-1756



ADAM-3925

DB25 Wiring Terminal for DIN-rail Mounting

Features

- Low cost universal DIN-rail mounting screw terminal module for PC-LabCard products with DB25 connector
- Screw-clamp terminal blocks allow easy and reliable connections
- Case dimensions (W x L x H): 77.5 x 56.3 x 51 mm (3.1" x 2.2" x 2.0")

To Be Used With

PCL-725, PCL-740, PCL-746+, PCL-833



ADAM-3950D

Dual 50-pin SCSI-II Wiring Terminal for DIN-rail Mounting

Features

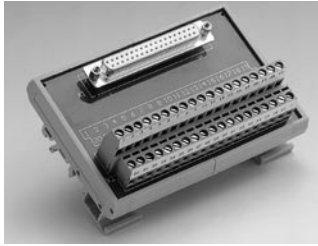
- Low cost universal DIN-rail mounting screw terminal module for industrial applications with dual 50-pin SCSI-II female connectors
- Case dimensions (W x L x H): 77.5 x 179.5 x 51 mm (3.1" x 7.1" x 2.0")

To Be Used With

PCI-1240, PCI-1752, PCI-1754, PCI-1756

ADAM-3900 Series

Wiring Terminals for
DIN-rail Mounting



ADAM-3937

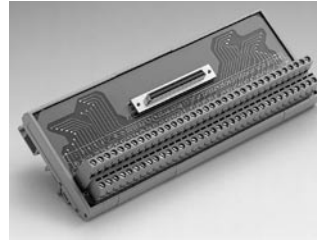
**DB37 Wiring Terminal for
DIN-rail Mounting**

Features

- Low cost universal DIN-rail mounting screw terminal module for DA&C cards with DB37 female connector
- Case dimensions (W x L x H): 77.5 x 146.3 x 51 mm (3.1" x 5.8" x 2.0")

To Be Used With

PCI-1730, PCI-1733, PCI-1734, PCI-1750, PCI-1761



ADAM-3968

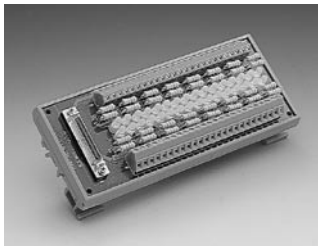
**68-pin SCSI-II Wiring Terminal
for DIN-rail Mounting**

Features

- Low cost universal DIN-rail mounting screw terminal module for industrial applications with 68-pin SCSI-II female connector
- Case dimensions (W x L x H): 77.5 x 191.2 x 51 mm (3.1" x 8.4" x 2.0")

To Be Used With

PCI-1710/1710L, PCI-1710HG/1710HGL, PCI-1711/1711L,
PCI-1712/1712L, PCI-1716/1716L, PCI-1721, PCI-1751,
PCI-1753/1753E, PCI-1723, PCI-1780



ADAM-3951

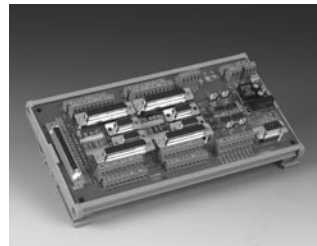
**Wiring Terminal Module with
LED indicators for DIN-rail
Mounting**

Features

- Low-cost DIN-rail mounting wiring terminal module for PCI-1752/1754/1756 with 50-pin SCSI-II female connector.
- Screw-clamp terminal blocks allow easy and reliable connections.
- Each LED indicates its current bi-directional I/O logic status with either green or red light.
- Case dimensions (W x L x H): 77.5 x 179.5 x 41.5 mm (3.1" x 7.1" x 1.6")

To Be Used With

PCI-1752, PCI-1754, PCI-1756



ADAM-3968M

**PCI-1241/1242 Wiring Terminal
with LED**

Features

- DIN-rail mounting screw terminal module for PCI-1241/1242 applications with 68-pin SCSI-II female connector.
- Status indicating LED for limit/home/server-on/in-position/pulse-output/EMS.
- Over-current protection for external power up to 1.1A.
- Case dimensions (W x L x H): 77.5 x 191.2 x 51 mm (3.1" x 8.4" x 2.0")

To Be Used With

PCI-1241, PCI-1242

ADAM-3900 Series

Wiring Terminals for DIN-rail Mounting



ADAM-3968/20

68-pin SCSI-II to Three 20-pin Wiring Terminal Module for DIN-rail Mounting

Features

- Low cost universal DIN-rail mounting screw terminal module for PC-LabCard™ products with 68-pin SCSI-II connectors
- Converts one 68-pin SCSI-II connector to three 20-pin connectors
- Case dimensions (W x L x H): 77.5 x 80 x 54.3 mm (3.1" X 3.2" X 2.1")

To Be Used With

PCI-1751, PCI-1753, PCI-1753E



ADAM-3968/50

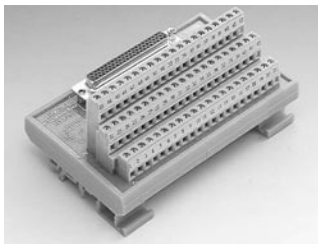
68-pin SCSI-II to Two 50-pin Box Header for DIN-rail Mounting

Features

- Low cost universal DIN-rail mounting screw terminal module for PC-LabCard™ products with 68-pin SCSI-II connectors
- Converts one 68-pin SCSI-II connector to two 50-pin Opto-22 compatible box headers
- Case dimensions (W x L x H): 77.0 x 101.0 x 54.3 mm (3.0" x 4.0" x 2.1")

To Be Used With

PCI-1751, PCI-1753, PCI-1753E



ADAM-3962

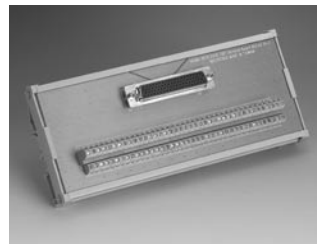
DB62 Wiring Terminal for DIN-rail Mounting

Features

- Low cost universal DIN-rail mounting screw terminal module for DA&C cards with DB62 female connector
- Screw-clamp terminal blocks allow easy and reliable connections
- Case dimensions (W x L x H): 77.5 x 124.5 x 63.5 mm (3.1" x 4.9" x 2.5")

To Be Used With

PCI-1762



ADAM-3978

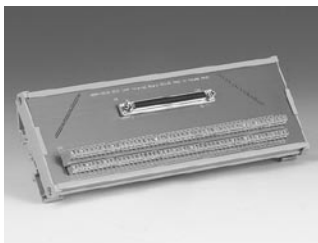
DB78 Wiring Terminal for DIN-rail Mounting

Features

- Mounting Low cost universal DIN-rail mounting screw terminal module for industrial applications with DB78 female connector
- Case dimensions (W x L x H): 86 x 191 x 42 mm (3.39" x 7.51" x 1.65")

To Be Used With

MIC-3753, PCI-3756



ADAM-39100

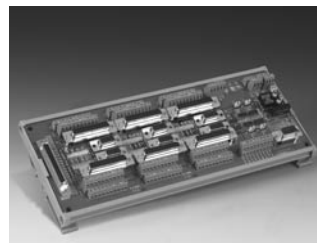
100-pin SCSI-II Wiring Terminal for DIN-rail Mounting

Features

- Low cost universal DIN-rail mounting screw terminal module for industrial applications with 100 pin SCSI-II female connector
- Case dimensions (W x L x H): 80 x 230 x 42 mm (3.14" x 9.05" x 1.65")

To Be Used With

PCI-1755



ADAM-39100M

PCI-1261 Wiring Terminal with LED

Features

- DIN-rail mounting screw terminal module for PCI-1261 applications with 100 pin SCSI-II female connector.
- Status indicating LED for limit/home/server-on/in-position/pulse-output/EMS.
- Over-current protection for external power up to 1.1A.
- Case dimensions (W x L x H): 80 x 230 x 42 mm (H) (3.14" x 9.05" x 1.65")

To Be Used With

PCI-1261