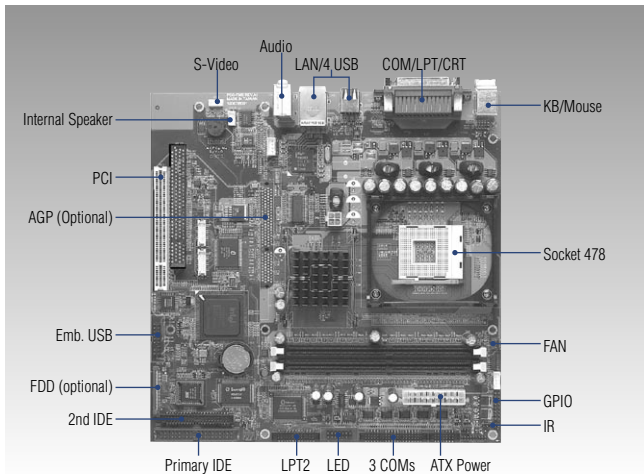


AIMB-340

Socket 478 Embedded ATX SBC for Multimedia Applications



Specifications

General

- **CPU** Socket 478 Intel Pentium 4 Northwood processor up to 3.06 GHz
- **2nd Cache Memory** 256 KB/512 KB processor
- **System Chipset** Intel 82845GV/82845GE/82845G, (82845GE/82845G optional)
- **BIOS** AWARD 256 KB Flash BIOS
- **System Memory** DDR DIMM x 2, Max. 2 G
- **Power Management** APM 1.1
- **SSD** CompactFlash® Card, DiskOnChip® support
- **Watch Dog Timer** 1 ~ 62 sec, System reset
- **Expansion Interface** 1 x PCI, 1 x AGP (optional), 1 x miniPCI
- **Battery** Lithium 3 V/220 mAh

I/O

- **I/O Interface** 2 x EIDE (40-pin Ultra DMA 66 & 100 and 44-pin Ultra DMA 33), 1 x K/B, 1 x mouse, 1 x RS-232/422/485, 5 x RS-232, 2 x LPT
- **USB** 6 x USB 2.0
- **Audio** Supports mic in, lin-in, CD audio in, lin-out
- **IrDA** 115.2 kbps, IrDA 1.0 compliant
- **GPIO** 2 TTL digital out, 4 TTL digital in
- **Ethernet** Intel 82562 or 82551 ER 10/100M or, Intel 82540EM 10/100/1000 Mbps (optional)

Ethernet

- **Chipset** Intel 82562 or 82551 ER 10/100M or, Intel 82540EM 10/100/1000M (optional)
- **Speed** 10/100Base-T (optional: 10/100/1000Base-T)
- **Interface** 1x RJ45
- **Standard** IEEE 802.3, IEEE 802.3u, IEEE 802.3z/ab (optional)

Features

- Socket 478 for Intel® Pentium® 4/Celeron processors
- Onchip 4 x AGP VGA/LCD & LCD controller up to 1600 x 1200, supports 36-bit XGA TFT LCD Panel
- 2/6 serial ports, one RS-232/422/485 the others are RS-232. COM 3 ~ 6 shared IRQ
- 6 USB 2.0 interface compliant included 1 Embedded USB
- Supports Mini PCI Socket for optional modem/wireless LAN
- Supports I2C, DIO interface
- Supports system overheat temperature control
- 63-levels watchdog timer, jumperless on-line setup supported
- TV-out (optional)

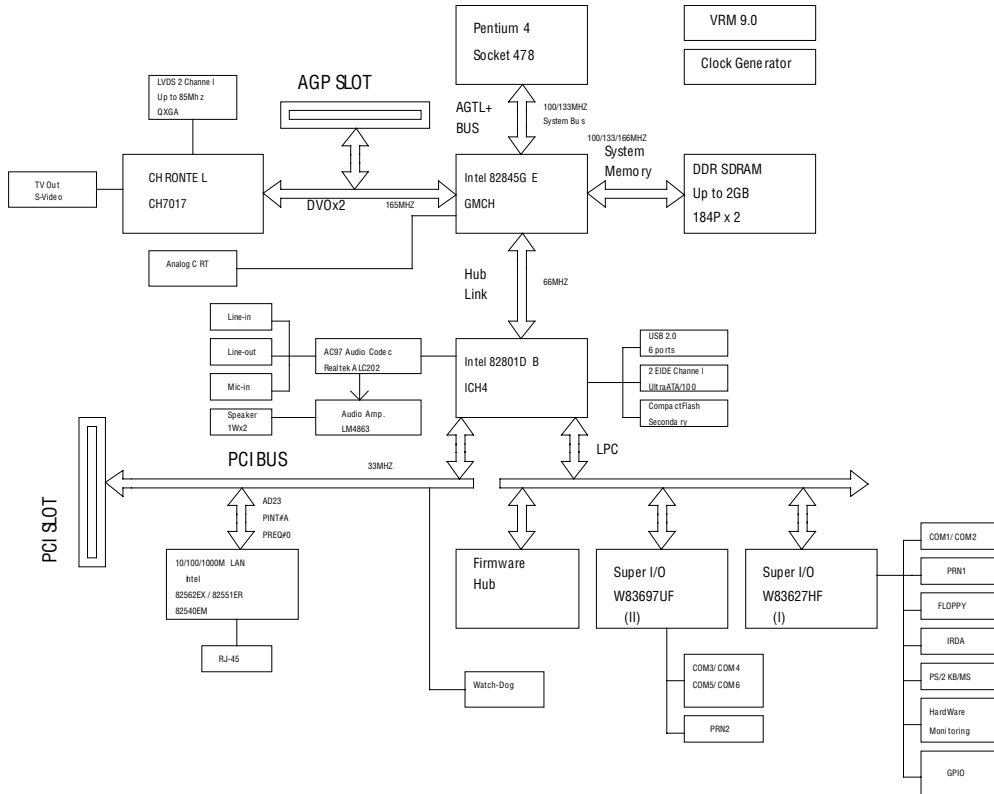
Display

- **Chipset** Intel® 845GV, 845G/845GE (optional)
- **Memory Size** Intel® Direct Memory Execution model to use system memory
- **Resolution** Maximum 3D Resolution Supported: 1600 x 1200 @ 32 bpp at 85 Hz
Maximum Video Overlay Display Resolution: 1600 x 1200 @ 32 bpp at 60 Hz
1280 x 1024 @ 32 bpp at 85 Hz

Mechanical and Environmental

- **Dimension (L x W)** 244 x 244 mm (9.6" x 9.6")
- **Weight** 0.8 kg (weight of total package)
- **Operating Temperature** 0 ~ 60° C (32 ~ 140° F), operation
- **Operating Humidity** Operating Humidity 0% ~ 90% relative humidity, noncondensing
- **Power Supply Voltage:** +5 V ±5 %, +12 V ±5 %, -12 V ±5 %
- **Power Consumption** +12 V (System) @ 220 mA, +12 V (CPU) @ 4 A, -12 V @ 70 mA, +5 V @ 295 mA, +3.3 V @ 2.6 A (Pentium 4 3.06 G, DDR333 256 M)

Board Diagram



Packing List

- 1 x AIMB-340 SBC
- 1 x Serial Cable 45 cm (p/n: 1700000445)
- 1 x 4-port serial cable 45 cm (AIMB-340F only) (p/n: 1700000447)
- 1 x Flat cable 40p 45 cm for PMA-66 (p/n: 1701400452)
- 1 x Startup Manual
- 1 x Utility CD

Ordering Information

Standard

- **AIMB-340F-00A1** Socket 478 EmbATX SBC, w/VGA, LCD, Audio, Ethernet, SSD, 6 COM and 2 LPT
- **AIMB-340L-00A1** Same as AIMB-340F w/2 COM, 1 LPT, w/o LCD

Optional Accessories

- **Serial cable** (p/n: 1701140201)
- **UDMA/100 IDE flat cable** (p/n: 1700000364)
- **DMA/33 IDE flat cable 44 pin to 40 pin** (p/n: 1701440350)
- **LPT Cable (45 cm)** (p/n: 1700000599)
- **USB cable (2.54 mm)** (p/n: 1700100170)
- **P4 CPU FAN w/heatsink up to 2.8 G for 1U** (p/n: 1759214200)
- **FDD Cable 26P 12 cm** (p/n: 1701260125)
- **FDD MODULE** (p/n: 9696340400)
- **Slim type CD-ROM adapter** (p/n: 9689000636)