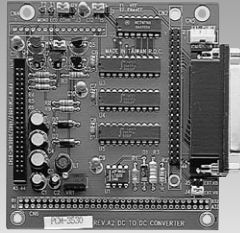


PCM-3530

PCM-261

Flat Panel Signal Converter Module

LVDS/TTL to DVI Module



PCM-3530



Features

- Supports a wide range of popular flat panel displays and traditional CRT monitors in high resolutions
- A flat panel display and a CRT VGA display can be displayed at the same time
- Onboard variable resistor for panel contrast adjustment

Specifications

General

- **Input** Enavee, +5 V
- **Input Connector** 44-pin, 2.0 mm pitch pin assignment. Can be used with MIC-2340, PCM-4862 and more
- **Output** ±40 V
- **Output Connector** 40-pin, 2.54 mm pitch
- **Maximum** 2 meters (max.) between the flat panel and Distance Transmission converter

Mechanical and Environmental

- **Dimension (L x W)** 96 x 90 mm (3.8" x 3.5")
- **Weight** 0.072 kg (0.159 lb)
- **Operating Temperature** Operating: 0 ~ 60° C (32 ~ 140° F)
Storage: -40 ~ 85° C (-40 ~ 185° F)
- **Operating Humidity** 0% ~ 90% relative humidity, non-condensing

Power

- **Power Supply Voltage** +5 V, ±5 % tolerance on power supply
- **Power Consumption** +5 V @ 1.2 W (typical)

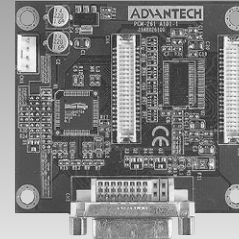
Packing List

- 1 x Startup manual
- 1 x CD-ROM (Manual, Driver, Utility)
- 1 x PCM-3530

Ordering Information

Standard

- **PCM-3530-0000** Flat panel signal converter module



PCM-261



Features

- Supports 18 and 24 bit LVDS to DVI
- Support 18 bit/24 bit TTL LCD to DVI (optional)

Specifications

General

- **Chipset** Silicon Image Sil 164; NS DS90CF364
- **LCD Connector** Hirose Output Connector; DVI

Mechanical and Environmental

- **Dimension (L x W)** 72 x 62 mm
- **Weight** 0.029 kg (0.123 lb)
- **Operating Temperature** 0 ~ 60° C (32 ~ 140° F)
- **Operating Humidity**

Power

- **Power Supply Voltage** +5V, ±5%

Packing List

- 1 x User's manual
- 1 x PCM-261 board

Ordering Information

Standard

- **PCM-261L-A0A1** 24 bit LVDS to DVI Module
- **PCM-261L-B0A1** 18 bit LVDS to DVI Module
- **PCM-261T-A0A1** 24 bit TTL to DVI Module

Optional Accessories

- **1700000851** 24 bit TTL to 24 bit TTL cable
- **1700000840** 18 bit LVDS to 18 bit LVDS FOR 855GME
- **1700000853** 24 bit LVDS to 24 bit LVDS
- **1700000827** 18 bit LVDS TO 18 bit LVDS