

PCM-3614/PCM-3618 PCM-3643

4/8 Port RS-422/485 High-Speed
Module

4/8 RS-232 COM Port Module



PCM-3614/PCM-3618



FCC

Features

- 4/8 independent RS-422/485 serial ports
- Automatic RS-485 data flow control
- Transmission speeds up to 921.6 Kbps
- Shared IRQ settings for each port
- Supports Windows® Compliant for Windows® 95/98/NT/ME/2000/XP, Windows® CE driver
- Built-in termination resistors
- LED indicators: TX, RX
- Standard PC ports: COM1, COM2, COM3, COM4 compatible

Specifications

General

- **Bus Interface** PC/104 (ISA)
- **Number of Ports** 4 (PCM-3614) /8 (PCM-3618)
- **I/O Address** 0 x 000 ~ 0 x 3F8
- **UART** 4 x 16C550 (PCM-3614)
8 x 16C550 (PCM-3618)
- **IRQ** 3, 4, 5, 6, 7, 9, 10, 11, 12, 15
- **Data Bits** 5, 6, 7, 8
- **Stop Bits** 1, 1.5, 2
- **Parity** none, even, odd
- **Speed (bps)** 50 ~ 921.6 K
- **Connectors** 4/8 DB-9 male
- **Signal Support** TxD+, TxD-, RxD-, CTS+, CTS-, RTS+ and RTS-
- **Surge Protection** 1000 V_{DC}

Mechanical and Environmental

- **Dimension (L x W)**
- **Weight**
- **Operating Temperature** Operating: 0 ~ 60° C (refer to IEC-68-1-1, 2)
Storage: -25 ~ 80° C
- **Operating Humidity** 0% ~ 90% relative humidity, non-condensing

Power

- **Power Consumption** +5 @ 450 mA (PCM-3614)
+5 @ 650 mA (PCM-3618)

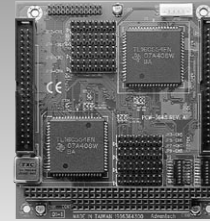
Packing List

- 1 x COM port cable
- 1 x CD-ROM (Manual, Driver, Utility)
- 1 x PCM-3614/3618

Ordering Information

Standard

- **PCM-3614** 4-port RS-422/485 high-speed module
- **PCM-3618** 8-port RS-422/485 high-speed module



PCM-3643



FCC

Features

- 8 port RS-232 support
- RS-232: TX, RX, RTS, CTS, DSR, DCD, DTR, RI
- IRQ selected for each serial port
- Share IRQ (4/8 ports share same IRQ)
- Full duplex serial communication
- Jumper selectable interrupt level
- Ribbon cabling from 40-pin headers to standard DB9 connectors provided
- Supports Windows® NT 4.0, Windows® 95/98/2000

Specifications

General

- **Chipset** Standard 16550, 16650, or 16750 compatible chipsets for serial ports
- **Channel** 4/8 port RS-232 support
- **Baud Rate** 50 ~ 115, 200 bps
- **Character Length** 5, 6, 7 or 8 bits
- **Parity** Even, odd, or none
- **Stop Bit** 1, 1.5, or 2
- **Interrupt Level** IRQ 3, 4, 5, 6, 7, 9, 10, 11, 12 or 15
- **I/O Connector** 40 pin header

Mechanical and Environmental

- **Dimension (L x W)** 96 mm x 90 mm (3.8" x 3.5")
- **Weight** 0.084 kg (0.185 lb)
- **Operating Temperature** Operating: 0 ~ 60° C (32 ~ 140° F)
Storage: -40 ~ 85° C (-40 ~ 185° F)
- **Operating Humidity** 0% ~ 90% relative humidity, non-condensing

Power

- **Power Supply Voltage** +5 V, ± 5 % tolerance on power supply
- **Power Consumption** +5 V @ 400 mA (typical)

Packing List

- 1 x COM port cable
- 1 x Start up manual
- 1 x CD-ROM (Manual, Driver, Utility)
- 1 x PCM-3643

Ordering Information

Standard

- **PCM-3643-08A1** 8 COM RS-232 Port Module
- **PCM-3643-04A1** 4 COM RS-232 Port Module