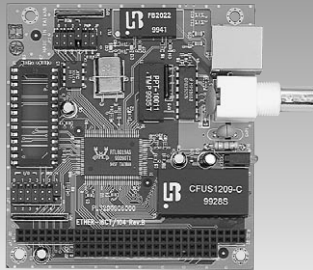


PCM-3664

PCM-3292

Jumperless 10BASE-T LAN Module w/ BNC

12-Channel Global Positioning System Receiver Module



PCM-3664



Features

- Automatically detects 8-bit or 16-bit
- Onboard 32 KB buffer for multi-package
- 10BASE-T Ethernet
- NE2000, PCM-3660 fully compatible
- With BNC connector on board

Specifications

General

- Chipset** Realtek 8019
- Interrupt Level** IRQ 3,4,5,9,10,11,12, or 15
- Boot ROM Address** C0000, C8000, D0000, or D8000H
- Data Bus** 8-bit, 16-bit, or auto-sending
- Connector** RJ-45, BNC Ethernet connectors
- Standard** IEEE 802.3 10 Mbps CSMA/CD 10 BASE-T transceiver

Mechanical and Environmental

- Dimension (L x W)** 96 mm x 90 mm (3.8" x 3.5")
- Weight** 0.088 kg (0.194 lb)
- Operating Temperature** Operating: 0 ~ 70° C (32 ~ 158° F)
Storage: -40 ~ 85° C (-40 ~ 185° F)
- Operating Humidity** 0% ~ 90% relative humidity, non-condensing

Power

- Power Supply Voltage** +5 V, ± 5 % tolerance on power supply
- Power Consumption** +5 V @ 400 mA (typical)

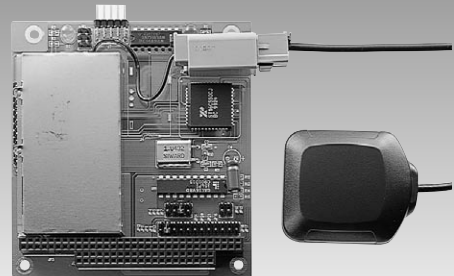
Packing List

- 1 x Startup manual
- 1 x CD-ROM (Manual, Driver, Utility)
- 1 x PCM-3664

Ordering Information

Standard

- PCM-3664-00B1** 10 BASE-T Single Ethernet Module w/BNC (8019)



PCM-3292



Features

- Extended operating temperatures: -30° C ~ 75° C
- Industrial grade construction: Designed to reliably operate in the harshest environments
- Cost-effective GPS solution: Product improvements made without significant price increase from previous product
- Solid, proven Rockwell 12-channel GPS engine
- Compact and rugged
- Low voltage/low noise operation
- Accurate performance

The PCM-3292 GPS module is designed with sophisticated satellite technology to locate and track any location in the world, in real-time. The PCM-3292 offers a wide range of GPS functions such as position, navigation, satellite and timing information for use in embedded-PC navigation systems. The most notable difference between the PCM-3292 and its competitors is that the operating temperature range has now been extended to cover from -30° C ~ 75° C. Combine this new temperature capability with the rugged industrial grade construction and the new application possibilities become apparent.

Specifications

General

- Control Chipset** Rockwell Jupiter
- Receiving Channel** 12-channel parallel
- Receiving Frequency** 1575.42 MHz ± 10 MHz (C/A code)
- Receiving Sensitivity** Under -145 dBm
- Accuracy (position)** 10m CEP (50%)
- Accuracy (velocity)** 0.2m/s (50%)
- Navigation Update Rate** Optional (default 1 second)
- Tracking Performance** Acceleration- up to 4 G
- Time to First Fix** Cold start- 50 seconds, warm start 35 seconds, Quick Start 3 second
- Positioning System** Default, WGS-84

Mechanical and Environmental

- Dimension (L x W)** 96 x 90 mm (2.8" x 3.5")
- Weight** 0.102 kg (.224 lb)
- Operating Temperature** Operating -30° ~ 85° C (-22 ~ 185° F)
- Operating Humidity** 0% to 95% relative humidity, non-condensing

Power

- Power Supply Voltage** 3.3 V ± 5 %, ripples within 50 mVp-p
- Power Consumption** + 3 V @ 35 mA

Packing List

- 1 x GPS antenna cable
- 1 x Startup manual
- 1 x CD-ROM (Manual, Driver, Utility)
- 1 x PCM-3292

Ordering Information

Standard

- PCM-3292-00A1** 12-channel GPS receiver module