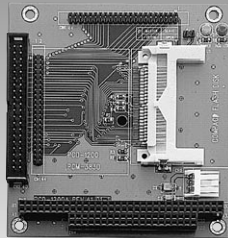


PCM-3835

PCM-3836

IDE Flash Disk Module/CompactFlash® Card

IDE Flash Disk Module/CompactFlash® Card



PCM-3835



CE FCC

Features

- IDE to CompactFlash Adaptor
- Three methods of power entry
 1. Standard 4-pin power input
 2. PC/104 connector
 3. 2.5" HDD power input
- Two methods of data input
 1. IDE 40-pin connector
 2. IDE 44-pin connector

Specifications

General

- **Form Factor** Standard 16-bit PC/104 form factor
- **IDE Connector** Two onboard 44-pin 2.0 mm pitch IDE connectors and one 40-pin 2.5 mm pitch IDE connector
- **Operation Voltage** +5 V ±10%
- **Environment** 0 ~ 60° C, operating
- **Power Connector** Standard 4-pin power input

Mechanical and Environmental

- **Dimension (L x W)** 96 mm x 90 mm (3.8" x 3.5")
- **Weight** 0.084 kg (0.185 lb)
- **Operating Temperature** Operating: 0 ~ 60° C (32 ~ 140° F)
- **Operating Humidity** 0% ~ 90% relative humidity, non-condensing

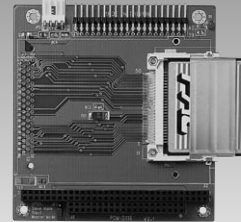
Packing List

- 1 x PCM-3835 SBC
- 1 x User's manual

Ordering Information

Standard

- **PCM-3835-00A1** IDE Flash disk module



PCM-3836



Features

- IDE to CompactFlash Adaptor (Type II)
- Three methods of power entry
 1. Standard 4-pin power input
 2. PC/104 connector
 3. 2.5" HDD power input

Specifications

- **Form Factor** Standard 16-bit PC/104 form factor
- **IDE Connector** One 40-pin 2.5 mm pitch IDE connector
- **Operation Voltage** +5 V ±10%
- **Environment** 0 ~ 60° C, operating
- **Power Connector** Standard 4-pin power input

Mechanical and Environmental

- **Dimension (L x W)** 96 mm x 90 mm (3.8" x 3.5")
- **Weight** 0.084 kg (0.185 lb)
- **Operating Temperature** Operating: 0 ~ 60° C (32 ~ 140° F)
- **Operating Humidity** 0% ~ 90% relative humidity, non-condensing

Packing List

- 1 x PCM-3836 SBC
- 1 x User's manual

Ordering Information

Standard

- **PCM-3836-0000** IDE Flash disk module (Type II)